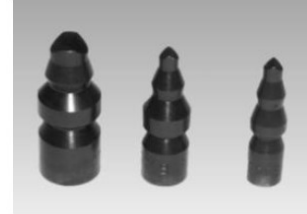
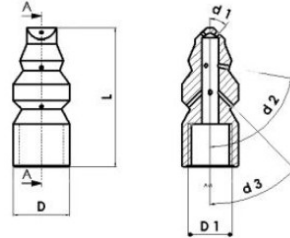


Pipe Cleaning Nozzle - 15,000 PSI (1000 bar)

Rigid, outer $\varnothing < 0.17"$ (17 mm)

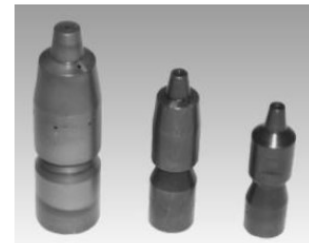
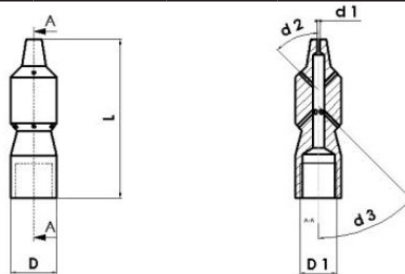
Z46-2e

in step form



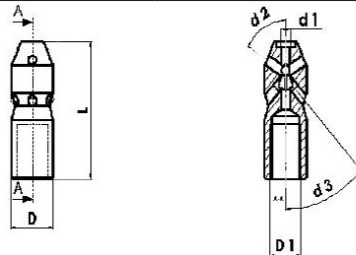
Part No.	Order No.	L in (mm)	D in (mm)	Nozzle Inserts	Connection D1	d 1 45°	d 2 80°	d 3 45°	min.-max. pipe inner \varnothing in (mm)
7024306	4801.04	1.49 (38)	0.39 (10)	drilled	M7 female	2 x 45°	4 x 80°	4 x 45°	0.59 (15) - 1.18 (30)
7024307	4802.14	1.57 (40)	0.51 (13)	drilled	1/8" FBSP	2 x 45°	4 x 80°	4 x 45°	0.79 (20) - 1.97 (50)
7023985	4803.15	1.65 (42)	0.67 (17)	drilled	1/4" FBSP	2 x 45°	4 x 80°	4 x 45°	1.18 (30) - 3.15 (80)

with tip



Part No.	Order No.	L in (mm)	D in (mm)	Nozzle Inserts	Connection D1	d 1 45°	d 2 80°	d 3 45°	min.-max. pipe inner \varnothing in (mm)
7023252	4901.04	1.65 (42)	0.39 (10)	drilled	M7 female	1 x	3 x 45°	6 x 45°	0.59 (15) - 1.18 (30)
7023253	4902.14	1.97 (50)	0.51 (13)	drilled	1/8" FBSP	1 x	3 x 45°	6 x 45°	0.79 (20) - 1.97 (50)
7023251	4903.15	2.44 (62)	0.67 (17)	drilled	1/4" FBSP	1 x	3 x 45°	6 x 45°	1.18 (30) - 3.15 (80)

with inserts M 3



Part No.	Order No.	L in (mm)	D in (mm)	Nozzle Inserts	Connection D1	d 1 45°	d 2 80°	d 3 45°	min.-max. pipe inner \varnothing in (mm)
7003901	2251.14	1.38 (35)	0.55 (14)	M3	1/8" FBSP	1 x	2 x 60°	8 x 45°	0.79 (20) - 1.97 (50)
7003902	2252.14	1.38 (35)	0.55 (14)	M3	1/8" FBSP	1 x	4 x 60°	6 x 45°	0.79 (20) - 1.97 (50)
7003903	2254.15	1.38 (35)	0.67 (17)	M3	1/4" FBSP	1 x	2 x 60°	8 x 45°	1.18 (30) - 3.15 (80)
7003904	2255.15	1.38 (35)	0.67 (17)	M3	1/4" FBSP	1 x	4 x 60°	6 x 45°	1.18 (30) - 3.15 (80)

By ordering please specify the working pressure and flow rate of the used pump!



WARNING: This product might contain a chemical known to the State of California to cause cancer, and birth defects or other reproductive harm. For more information go to www.P65Warnings.ca.gov