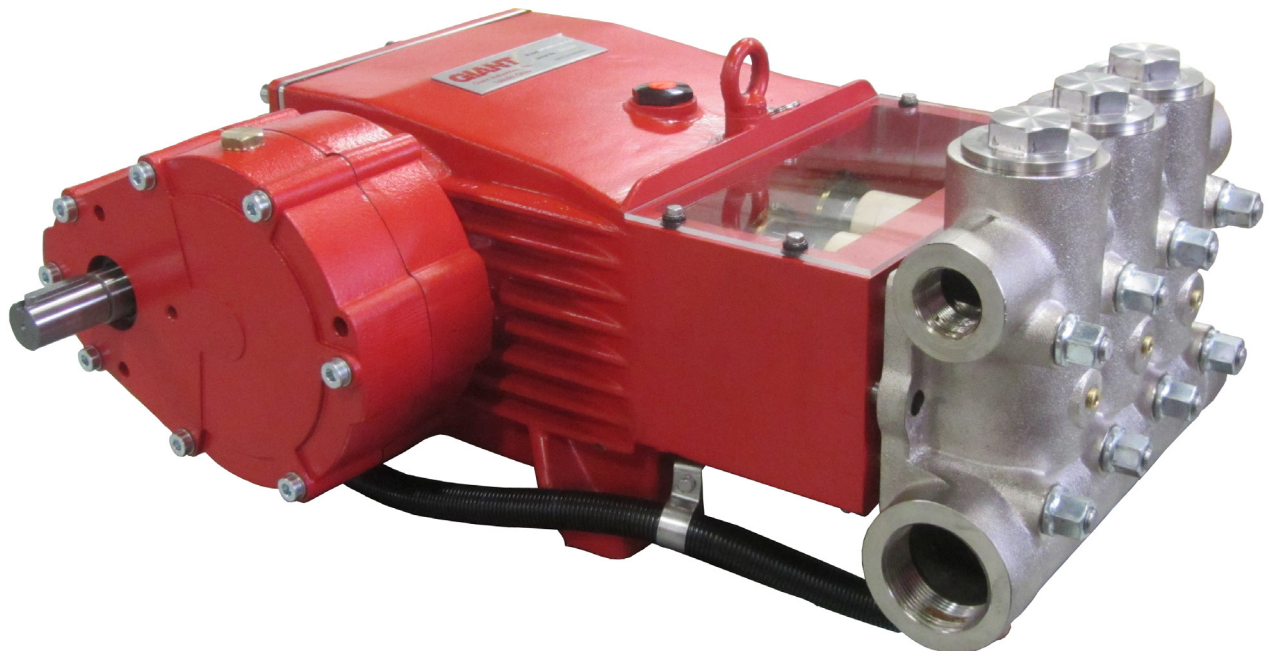


Models

GP7645GB-180/ GP7655GB-180

Triplex Ceramic
Plunger Pump
Operating Instructions/
Repair and Service Manual

Gearbox Versions for Pinion Shaft Drives



Contents:

Pump Specifications:	page 2
Installation Instructions:	page 2
Maintenance/Repair Instructions:	pages 3-4
Exploded View:	page 5
Parts List:	page 6
Kits:	page 7
Torque Specifications:	page 7
Maintenance Information:	page 7
Dimensions:	back page
Warranty Information:	back page

Updated 02/25

GP7645GB-180 & GP7655GB-180 PUMP SPECIFICATIONS

Performance

	Power Required	Pressure	Input Speed	Max. Speed	Max. Flow	Max. Temp.	Plunger \varnothing	Plunger Stroke	Weight	NPSHR
Model	BHP (kW)	PSI (bar)	RPM	RPM	GPM (l/min)	°F (°C)	in (mm)	in (mm)	lbs. (kg)	ft. of head (mWs)
GP7645	111 (82.5)	3000 (200)	1800	800	55.5 (210)	86 (30)	1.77 (45)	2.28 (58)	474 (215)	29.8 (9.1)
GP7655	118 (88.0)	2000 (140)	1800	800	84.5 (320)	86 (30)	2.17 (55)	2.28 (58)	474 (214)	32.1 (9.8)

1) Figures given for maximum pressure and maximum speed (rpm) apply to intermittent operation with cold water.

Definition of intermittent operation:

Operation at full performance for not more than altogether 20 minutes an hour, with the pump running without pressure or turned off inbetween.

For example, this can be full load operation for 5 minutes four times an hour with 10 minute breaks inbetween or continuous full load operation for 20 minutes followed by a 40 minute break.

2) Higher water temperatures are possible with a separate external crankcase cooling system.

The manufacturer is to be contacted in this case.

3) The maximum pressure is to be reduced by 10% where continuous operation with a cooler is involved.

NPSHR / Inlet pressure

Required NPSH refers to water at 68 °F (20°C) at maximum permissible pump speed.



The suction side input pressure must not exceed 29 PSI (2 bar) if the integrated gear oil cooling system is connected.

The maximum system pressure for a separately fitted oil cooling system must likewise not exceed 29 PSI (2 bar).

If the integrated gear oil cooling system is not used, the maximum admissible input pressure on the pump suction side is 29 PSI (2 bar). In this case, transmitted pulsation from the pump to the suction line must be sufficiently damped.

Level of noise emission

Emission sound pressure level: ≤ 94 dB(A)

Fields of application

The fields of application of these pump types correspond to the specifications in the assembly instructions Giant Industries.

Ambient conditions

Ambient temperature: $41^{\circ}\text{F} < T_{\text{Amb.}} < 86^{\circ}\text{F}$

Ambient temperature: $5^{\circ}\text{C} < T_{\text{Amb.}} < 30^{\circ}\text{C}$

Oil filling

• Filling quantities

Pump with gear and oil cooler **2.1 gal (8,0 l)**

• Quality: Industrial gear oil **ISO VG 220** or automotive gear oil **SAE 90 GL4 (Giant's p/n 01154)**

• Intervals: first oil change after **50 operating hours**, then every **1000 operating hours**, but at the latest after **12 months**.



If the pump is mounted on a vehicle (possible inclined position during operation) and/or if the pump speed is between 300 rpm and 500 rpm, the required oil quantity increases by **0.26 gal (1 liter)**.

Installation/ Putting into Operation

Shaft protector

When the pump is in operation, the open shaft end must be covered up by shaft protector (21), the driven shaft side and coupling by a contact-protector and the plunger room by cover (30).

Direction of pump rotation

An arrow on the pump crankcase indicates the recommended direction of rotation for the drive shaft.

The indicated direction ensures that oil is correctly distributed on and into the crosshead guides via optimal connecting rod motion thus providing best possible lubrication particularly with regard to continuous operation.

Reduction gears can be fitted on the left or right side.

Orientation of the gearbox is in either the "3 o'clock" or "9 o'clock" position.

Suction line filter

Recommended mesh size 150 μm .

Gear oil cooling

The GP7600 pump series comes with a gear oil cooling system.



The pumps can be run without gear oil cooling in continuous operation **up to** a power rating of **80.5 HP (60 kW)** or with major intermittent operation at full performance.

If operational power **exceeds 80.5 HP (60 kW)** this oil cooling system is recommended.

The cooling system works independently using the conveyed water during pump operation. A part of the water drawn by the plunger goes through a pipe and to a cooler plate in the drive casing. The flow amount in the cooling system therefore depends on the plunger diameter and the pump rpm. The amount of conveyed cooling water ensures satisfactory oil cooling under observation of maximum admissible pump rpm limits.

The temperature of the pumped water should not exceed 86 °F (30°C).



If higher medium temperatures or liquids other than water are involved or aggressive media such as seawater, demineralised water etc the integrated gear oil cooling system must be decoupled and a separate cooling circuit set up.

The separate cooler must have a cooling efficiency of 1500 watt.

If there is a danger of frost, an appropriate amount of antifreeze must be mixed into the cooling circuit.

GP7645GB-180 & GP7655GB-180 Repair Instructions

Operation



The pump and cooling system must be emptied if there is a danger of frost. Note that travel wind, for example, can cause water in pumps fitted on open vehicles to freeze even if the outside temperature is above freezing point.

Empty the pump through the second unused suction and discharge connection using compressed air, for example. Bottom plugs (12) on the suction channel can be opened as well.

The pump can also be run "dry" for 1-2 minutes to aid emptying.

Empty the cooling system by removing screw joints (K11) on the pump head and by blowing the hoses with compressed air on the (K11/K7) side.

Anti-freeze is recommended to guard against frost where a separate cooling circuit is used.

Maintenance and Servicing

For the type of threadlocker used and the required tightening torques, observe the table in the exploded view.

Special tools required

The following special tools are required for assembly:

- Extraction tool (p/n 07662)
- Pull-out tool size 5
- Snap-ring tongs

Suction and Discharge Valves

Screw off plugs (58).

Take out tension spring (57).

Remove the complete valve assemblies (51, 52) and valve spacer (55) using either the valve puller tool or an M16 hexagon screw.

To dismantle valves:

Screw valve seat (51E, 52E) out of spring tension cap (51A, 52A).

Check sealing surfaces and replace worn parts.

Check O-rings and support rings.

Tighten plugs (58) to the required torque.



If worn, the discharge valve seat (52E) can be turned 180° round and refitted.

Seals and Plunger

Loosen nuts (49A) and remove pump head.

Separate plunger connection (36A) from crosshead (25) by means of an open-end wrench (size 36mm).

Pull seal sleeves (39) out of their fittings in the crankcase.

Take seal case (38) out of seal sleeve (39). For GP7645 only, remove tension spring (45).

Take seal unit (40,41,42,43 – GP7655) or (41,42,43 – GP7645) out of the seal sleeve.

Examine plunger pipe (36B) and seals (39A, 42) and O-rings (38A, 38B) or (41 – GP7655).

Worn parts to be replaced.

When replacing plunger pipe (36B), tighten tension screws (36C) to the required torque.

Replace worn parts; grease seals with Silicone before installing.



Always remove the valve casing (50) first before taking the 3 plungers (36) off the crossheads (25).

Otherwise the plunger (36) could hit against the spring tension cap (51A) and valve spacer (55) when turning the pump.

The service life of the seals is maximized if a minimal amount of leakage is present.

A few drops of water can drip from each plunger every minute.

Leakage has to be examined every day; the plunger seals must be changed should leakage become excessive, i.e. constant dripping.

This assists lubrication and keeps the seals cool.

It is therefore not necessary to replace seals before the leakage becomes too heavy and causes output and operating pressure to drop.

When reassembling, tighten plunger screws (36A) to the required torque.

Mounting Valve Casing:

Examine the O-rings (38A, 38B) on seal cases (38).

Clean the seal sleeve (39) contact surfaces in the crankcase and the sealing surfaces in the valve casing.

Carefully push the valve casing (50) onto the seal case O-rings and centring studs (50A).

Tighten nuts (49A) to the required torque.

GP7645GB-180 & GP7655GB-180 Repair Instructions

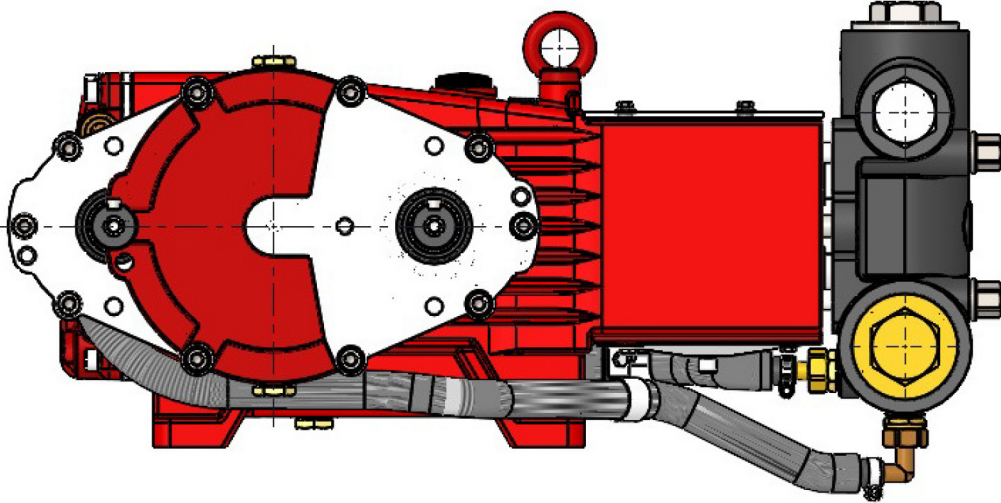
Mounting the Reduction Gear to the Crankcase

Remove the screws (17).

Take bearing cover (14) with its radial shaft seal (15) and fitting key (23) off the crankcase.

Mount the casing bottom (68) together with O-ring (16) and centring ring (71) using the six screws (84).

The gearbox drive shaft can be rotated 180° to the pump drive shaft. See sketch below.



Coat O-ring (16) lightly with grease and place it into the groove of the casing bottom.

Fit the casing bottom with screws (84).

Tap the fitting pins (78) into both bores.

Press the pinion shaft (72 with bearing 74) into the bearing area of the casing bottom.

Put the spacer ring (80) onto the pump shaft.

Mount the fitting key (23) and then the gear wheel (72).

To ease fitting, the pinion can also be pushed away from the gear wheel due to the movability of the roller bearing (74).

Secure the gear wheel with the second spacer ring (81) and tension disc (82), coating screw (83) with Loctite before tightening. Coat seal (70) lightly on one side only.

Position the greased side onto the casing bottom.

Fit cylinder roller bearing (75) and shims (76) onto pinion (72B) and mount the casing top.

Making sure to carefully thread the pinion shaft through the radial shaft seal ring.

Use screws (85) to secure casing parts. Turn the drive several times by hand to check for smoothness.

To Dismantle Reduction Gear

Remove screws (85).

Press off casing top (69) by screwing two screws into both thread bores.

Push off casing top (69). Remove screw (83) and take off spacer ring (81) and tension disc (82).

Push the gear wheel off the crankcase by also screwing in two M10x110 screws towards the bearing cover side.

If required, supplementary assembly instructions can be requested from the manufacturer, Giant Industries.

Repair Kits - GP7645GB-180 & GP76555GB-180

Plunger Packing Kit, GP76545GB-180 # 09603

Item	Part #	Description	Qty.
38A	13156	O-Ring	3
38B	06258	O-Ring	3
39A	13290	Grooved Ring	3
42	13294	V-Sleeve	9

Plunger Packing Kit, GP76555GB-180 # 09220

Item	Part #	Description	Qty.
38A	13156	O-Ring	3
38B	07721	O-Ring	3
39A	07723	Grooved Ring	3
42	07711	V-Sleeve	6

Oil Seal Kit - # 09221

Item	Part #	Description	Qty.
32	07624	Radial Shaft Seal	3
33A	07627	O-Ring	3

Inlet Valve Kit - # 09659

Item	Part #	Description	Qty.
51	05594	Inlet Valve Assembly	1
56A	07658	O-Ring	1
56B	07635	Support Ring	1

Large Discharge Valve Kit - # 09660

Item	Part #	Description	Qty.
52	05600	Discharge Valve Assy	1
55	05647	Valve Spacer	1
56A	07658	O-Ring	1
56B	07635	Support Ring	1

Small Discharge Valve Kit* - # 09661

Item	Part #	Description	Qty.
51B	05450	Valve Spring	1
51C	05247	Valve Plate	1
51D	05596	O-Ring	1
52F	05599	O-Ring	1
56A	07658	O-Ring	1
56B	07635	Support Ring	1

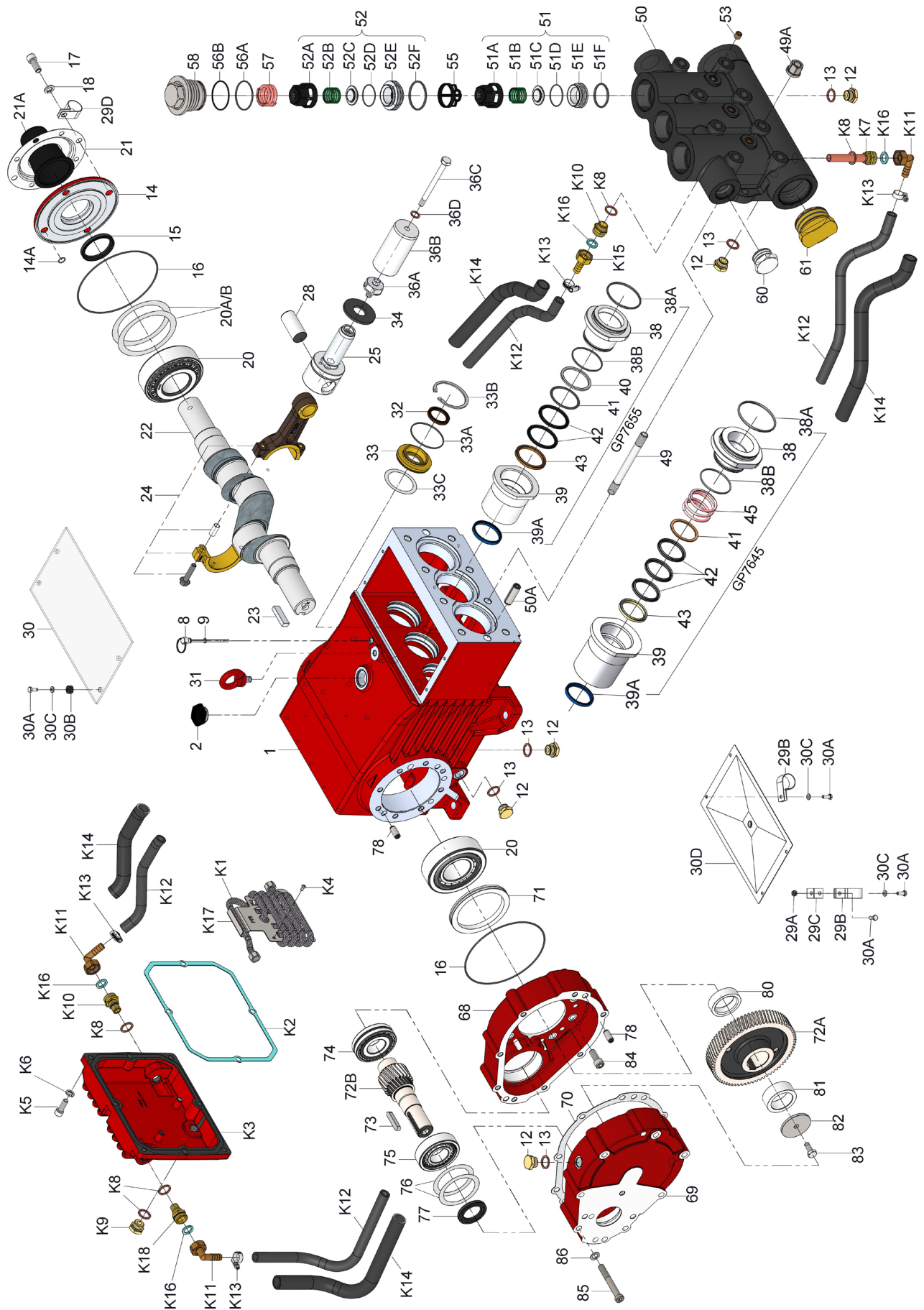
* The discharge valve seat (item 52E) can be flipped over and used. If it is damaged on both sides, order kit # 09660.

Torque Specifications - GP7645GB-180 & GP76555GB-180

Position	Torque Amount
17	33 ft.-lbs. (45 Nm)
24	30 ft.-lbs. (40 Nm)
30A	89 in.-lbs. (10 Nm)
36A	33 ft.-lbs. (45 Nm)
36C	30 ft.-lbs. (40 Nm)
49A	103 ft.-lbs. (140 Nm)
58	107 ft.-lbs. (145 Nm)
K5	33 ft.-lbs. (45 Nm)

Preventative Maintenance Check-List & Recommended Spare Part List							
Check	Daily	Weekly	50hr	Every 500 hrs	Every 1500 hrs	Every 3000 hrs	
Oil Level / Quality	X						
Oil Leaks	X						
Water Leaks	X						
Belts, Pulley		X					
Plumbing		X					
Recommended Spare Part							
Oil Change (p/n 01154)			X	X			
Plunger Packing Kits(1 kit/Pump)					X		
Oil Seal Kit (1 kit/Pump)					X		
Valve Kit (6 kits/pump)							X

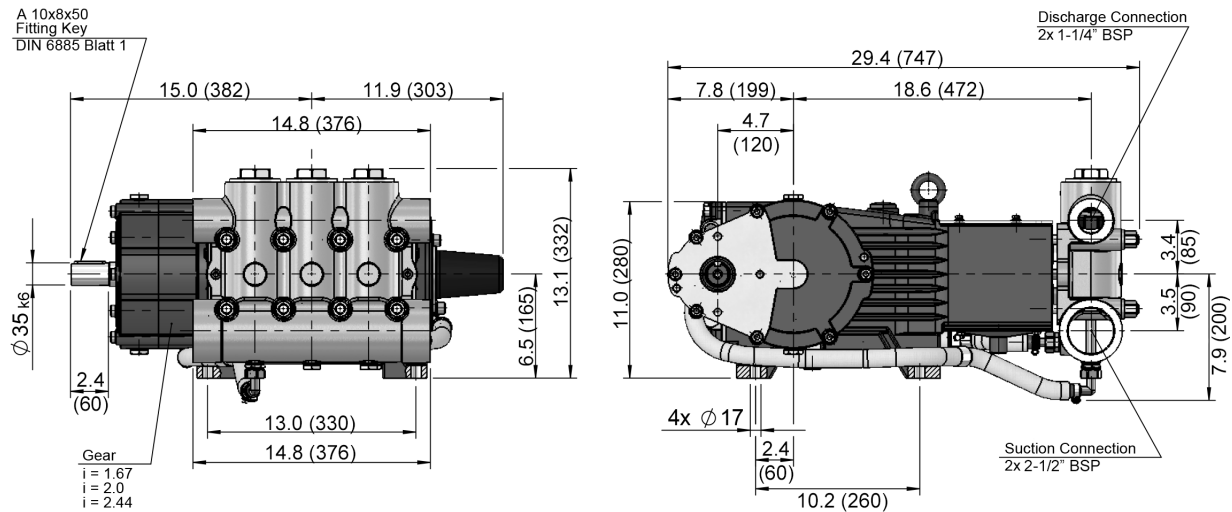
Exploded View - GP7645GB-180 & GP7655GB-180



GP7645GB-180 & GP7655GB-180 Spare Parts List

<u>ITEM</u>	<u>PART</u>	<u>DESCRIPTION</u>	<u>QTY.</u>	<u>ITEM</u>	<u>PART</u>	<u>DESCRIPTION</u>	<u>QTY.</u>
1	05769	Crankcase	1	50	07791	Valve Casing	1
2	13000	Oil Filler Plug Assembly	1	50A	13162	Centering Stud	2
8	07603	Oil Dip Stick	1	51	05594	Inlet Valve Assembly	
9	01009	O-Ring, Dip Stick	1			(51A-51F)	3
12	07109	Drain Plug	8	51A	05595	Spring Tension Cap	3
13	06272	Copper Seal for 12	8	51B	05450	Valve Spring	3
14	05770	Bearing Cover	1	51C	05247	Valve Plate	3
14A	12204	O-Ring	4	51D	05596	O-Ring	3
15	05771	Radial Shaft Seal	1	51E	05597	Inlet Valve Seat	3
16	05772	O-Ring	2	51F	05166	O-Ring	3
17	05642	Inner Hexagon Screw	4	52	05600	Discharge Valve Assembly	3
18	05039	Spring Ring	4	52A	05595	Spring Tension Cap	3
20	05773	Taper Roller Bearing	2	52B	05450	Valve Spring	3
20A	05774	Fitting Disc (Shim), 0.1 mm	1-5	52C	05247	Valve Plate	3
20B	04570	Fitting Disc (Shim), 0.15 mm	1-5	52D	05596	O-Ring	3
21	05645	Shaft Guard Holder	1	52E	05598	Discharge Valve Seat	3
21A	05646	Shaft Guard	1	52F	05599	O-Ring	3
22	04517A	Crankshaft	1	53	22610	Plug, 1/4" NPT	3
23	05776	Key	1	55	05647	Valve Spacer	3
24	05777	Connecting Rod Assy.	3	56A	07658	O-Ring	3
25	05778	Crosshead Assy.	3	56B	07635	Support Ring	3
28	05779	Crosshead Pin	3	57	13173	Tension Spring	3
29A	07408	Hexagon Nut	1	58	06682	Plug, M64 x 2	3
29B	05383	Bracket 2 f. Cooling Hose	2	60	12251	Plug, 1-1/4" NPT	1
29C	05662	Fixing Bracket	1	61	05170	Plug, 2-1/2" NPT	1
29D	05381	Bracket 2 f. Cooling Hose	1	68	05782	Bottom Casing for Gear	1
30	07619	Cover Plate	1	69	05783	Top Casing for Gear	1
30A	07225-0100	Hexagon Screw	9	70	05784	Gear Seal	1
30B	13136	Grommet	4	71	05785	Centering Ring	1
30C	05053	Disc	8	72A/B	04531	Gear Wheel Set, i=1.87	1
30D	13154	Cover	1	72A/B	04519	Gear Wheel Set, i=2.25	1
31	07623	Eye Bolt	1	72A/B	04518	Gear Wheel Set, i=2.73	1
32	07624	Radial Shaft Seal	3	73	13243	Fitting Key	1
33	07626	Seal Retainer	3	74	05787	Self-Aligning Roller Bearing	1
33A	07627	O-Ring for Seal Retainer	3	75	05700	Cylinder Roller Bearing	1
33B	07628	Circlip for 33	3	76	07117	Fitting Disc	1-5
33C	07249	Fitting Disc	3	77	05701	Radial Shaft Ring	1
34	13137	Oil Scraper (Flinger)	3	78	05665	Cylindrical Pin	4
36	06165A	Plunger Assy. (36A-36D), GP7645GB	3	80	05790	Spacer Ring 1 for Gear	1
				81	05791	Spacer Ring 2 for Gear	1
36	07706	Plunger Assy. (36A-36D), GP7655GB	3	82	05802	Fixing Plate for Gear	1
				83	13358	Hexagon Screw	1
36A	07667	Plunger Connection	3	84	05792	Hexagon Socket Screw	7
36B	05157A	Plunger Pipe, GP7645GB	3	85	05702	Hexagon Socket Screw	8
36B	07666	Plunger Pipe, GP7655GB	3	86	07159	Washer	8
36C	07664	Tensioning Screw	3	90	03704-180	Oil Cooler Assembly	1
36D	07665	Copper Ring	3	K1	03705	Stainless Steel Tubing	1
38	06167	Seal Case, GP7645GB	3	K2	03708	Gear Seal Cover	1
38	13155	Seal Case, GP7655GB	3	K3	03709	Gear Cover	1
38A	13156	O-Ring	3	K4	03710	Clamping Screw	2
38B	06258	O-Ring, GP7645GB	3	K5	22706	Hexagon Socket Screw	8
38B	07721	O-Ring, GP7655GB	3	K6	06725	Washer	8
39	06171	Seal Sleeve, GP7645GB	3	K7	05755	Connection for Oil Cooler	1
39	13157	Seal Sleeve, GP7655GB	3	K8	06272	Copper Seal	5
39A	13290	Grooved Ring, GP7645GB	3	K9	07109	Plug, 1/2" BSP	2
39A	07723	Grooved Ring, GP7655GB	3	K10	05031	Reducing Nipple	2
40	07797	Support Ring, GP7655GB	3	K11	05032	U-Joint Connector with Nut	3
41	13296	O-Ring, GP7645GB	3	K12	05033	Tube for Cooler	1.4m
41	13158	O-Ring, GP7655GB	3	K13	05402	Hose Clamp	4
42	13294	V-Sleeve, GP7645GB	9	K14	05403	Hose Guard	1.3m
42	07711	V-Sleeve, GP7655GB	6	K15	05404	Hose Coupling Nut	1
43	13293	Pressure Ring, GP7645GB	3	K16	05405	Flat Gasket	4
43	07712	Pressure Ring, GP7655GB	3	K17	03706	Hose Plate for Cooler	1
45	13297	Tension Spring, GP7645GB	3	K18	03707	Reduction Nipple	2
49	13159	Stud Bolt	8		07662	Valve Tool (not shown)	1
49A	13160	Hexagon Nut	8				

GP7645GB-180 & GP7655GB-180 Dimensions - Inches (mm)



GIANT INDUSTRIES LIMITED WARRANTY

Giant Industries, Inc. pumps and accessories are warranted by the manufacturer to be free from defects in workmanship and material as follows:

1. Five (5) years from the date of shipment for all pumps used in portable pressure washers with NON-SALINE, clean water applications.
2. Two (2) years from the date of shipment for Giant pumps used in car wash applications.
3. One (1) year from the date of shipment for all other Giant industrial and consumer pumps.
4. Six (6) months from the date of shipment for all rebuilt pumps
5. Ninety (90) days from the date of shipment for all Giant accessories.

This warranty is limited to repair or replacement of pumps and accessories of which the manufacturer's evaluation shows were defective at the time of shipment by the manufacturer. The following items are NOT covered or will void the warranty:

1. Defects caused by negligence or fault of the buyer or third party.
2. Normal wear and tear to standard wear parts.
3. Use of repair parts other than those manufactured or authorized by Giant.
4. Improper use of the product as a component part.
5. Changes or modifications made by the customer or third party.
6. The operation of pumps and or accessories exceeding the specifications set forth in the Operations Manuals provided by Giant Industries, Inc.

Liability under this warranty is on all non-wear parts and limited to the replacement or repair of those products returned freight prepaid to Giant Industries which are deemed to be defective due to workmanship or failure of material. A Returned Goods Authorization (R.G.A.) number and completed warranty evaluation form is required prior to the return to Giant Industries of all products under warranty consideration. Call (419)-531-4600 or fax (419)-531-6836 to obtain an R.G.A. number.

Repair or replacement of defective products as provided is the sole and exclusive remedy provided hereunder and the MANUFACTURER SHALL NOT BE LIABLE FOR FURTHER LOSS, DAMAGES, OR EXPENSES, INCLUDING INCIDENTAL AND CONSEQUENTIAL DAMAGES DIRECTLY OR INDIRECTLY ARISING FROM THE SALE OR USE OF THIS PRODUCT.

THE LIMITED WARRANTY SET FORTH HEREIN IS IN LIEU OF ALL OTHER WARRANTIES OR REPRESENTATION, EXPRESS OR IMPLIED, INCLUDING WITHOUT LIMITATION ANY WARRANTIES OR MERCHANTABILITY OR FITNESS FOR A PARTICULAR PURPOSE AND ALL SUCH WARRANTIES ARE HEREBY DISCLAIMED AND EXCLUDED BY THE MANUFACTURER.



WARNING: This product might contain a chemical known to the State of California to cause cancer, and birth defects or other reproductive harm.
For more information go to www.P65Warnings.ca.gov